



VULCAN 130
TSV-130

VULCAN 350
TSV-350



USER MANUAL

Thank you for choosing the Serfas Vulcan Tail Light! We know you will be happy with the performance and value you are getting in this product. This manual is intended to help get you started on your journey down that well lit path. Please read this manual completely and use the recommended care precautions before using this product. If you have any further questions regarding this product please go to our website at www.serfas.com or call us at 1-623-888-5841.

SPECIFICATIONS

- * 3 CREE® LED's (TSV-350)
- * 1 CREE® LED (TSV-130)
- * LAST MODE MEMORY FUNCTION
- * AUTO SAFE MODE
- * USB RECHARGEABLE
- * 180° VISIBILITY
- * WATER RESISTANT (IPX4)

CONTENTS INCLUDED



Contents:

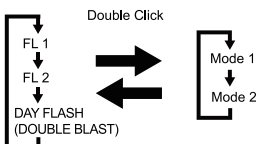
- Vulcan Tail Light
- Aero Post Bracket
- Small/Medium O Rings
- USB C Cable
- Manual

Optional Accessories:

- Multiple Serfas Brackets

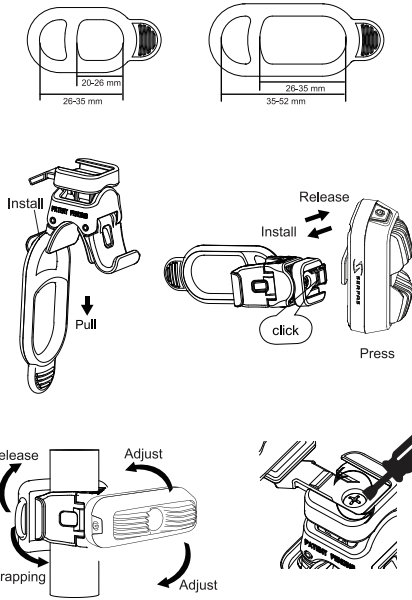
LIGHT OPERATION

1. Press and hold the power button for 1 second to switch on or off. (With mode memory, the light will resume previous mode upon next usage.)
2. Double click the power button to toggle between the steady and flashing modes.



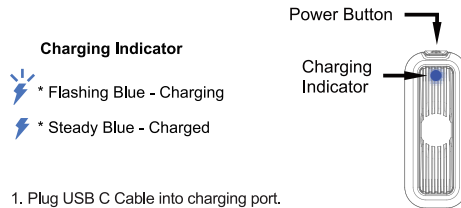
HOW TO MOUNT THE TAIL LIGHT

1. Choose the strap that fits your bar.
2. Make sure the strap is secure on the light hook.
3. Hold the light on the handlebar/seat post.
4. Wrap the rubber strap around the bar and stretch the strap around the opposite light hook.
5. Slide the light forward onto bracket until it click into place.
6. Press down the release lever to remove.
7. Adjust the vertical beam angle when mounted on the seatpost, by loosening the screw knob and rotating the light up or down for your preferred angle. Tighten the screw knob to secure the light in place.

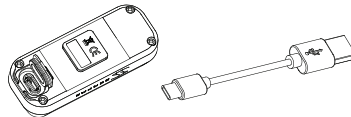


HOW TO CHARGE THE BATTERY

Attention: If light is being stored without use for a long period of time, fully recharge every 3 months. Please store light in a cool and dry place. Recharge the battery after each long use.



1. Plug USB C Cable into charging port.
2. Plug cable into wall or computer USB socket.
3. Charge time may depend on computer or wall charger.
4. When the battery is fully charged, please unplug the USB cable or wall charger. Then replace the rubber cover.
5. It is normal that the battery may get warm during charging as the chemical in battery is undergoing a reaction. If the battery is not drained completely before charging, it may also get warm.



BATTERY CHARACTERISTICS

1. Several factors can influence the battery's durability: the maintenance routine, the temperature and number of charges, etc.
2. The battery capacity may become 80% effective after 300-500 charge/discharge cycles.
3. The battery voltage and capacity decrease at low temperatures, especially near or below the freezing point. The capacity decreases 5%-10% at freezing (burn time decreases 50%). At -20°C, the capacity decreases 30% (burn time decreases 70%). The battery performance will return normal when the temperature gets up to 70°F/20°C. The battery will lose around 1% of its capacity per day when you store the battery at normal room temperature. Battery temperature should never exceed 104°F/40°C, it will lose about 5% of its capacity per day.
4. If you do not use the battery for a long time, be sure to fully recharge every 3 months. Please store the battery in a cool and dry place.

AUTO SAFE MODE

1. When the "⚡" indicator turns on and is steady blue, you should charge your light.



Steady-Blue

2. When the "⚡" indicator flashes, the battery has very low power and will enter Auto Safe Mode. When Auto Safe Mode is on, light mode cannot be changed. This mode is meant to get you home safely on a very low flash setting. This mode extends beyond stated runtime for 45 minutes to an hour depending on mode it was previously in.



Flashing-Blue

RUNTIMES

TSV-130

MODE	LUMEN	RUNTIME
Low	15	up to 5.5 hrs
High	50	up to 1.5 hrs
Low Flash	20	up to 22 hrs
High Flash	75	up to 10 hrs
Daytime Flash	130	up to 19 hrs
CHARGE TIME: 2.5 hrs		At 300mA

TSV-350

MODE	LUMEN	RUNTIME
Low	35	up to 6 hrs
High	140	up to 1.5 hrs
Low Flash	50	up to 20 hrs
High Flash	200	up to 9 hrs
Daytime Flash	350	up to 19 hrs
CHARGE TIME: 2.5 hrs		At 600mA

HOW TO CLEAN AND CARE FOR THE LIGHT

- * Make sure to clean the dust and dirt on the light with a soft damp cloth after every ride.
- * Water resistant is for rain water only. Do not submerge the battery or the whole light into water when cleaning.



CAUTION: When riding at night, please follow the guidelines below:

- * Use of appropriate bike lighting is recommended & in some places required by law.
- * Light may get hot when in use.
- * Unplug USB connector by the plug, never by the cable.
- * Do not dismantle the tail light. (VOIDS WARRANTY)
- * Not for use under water.
- * Do not look directly at light.
- * Keep tail light away from fire and combustible materials.
- * Unplug the light, charger and cable once the battery is fully charged.
- * This light is for bicycle use only.
- * Do not charge over 5V.
- * Do not smoke while charging as the battery may release hydrogen gas. Always charge your battery in a well-ventilated space.
- * Never connect or disconnect the plug or cord with wet hands while charging. Do not connect or disconnect the plug or cord when they are wet, it may lead to electric shock.

WARRANTY

LIMITED LIFETIME WARRANTY REQUIRES ONLINE REGISTRATION.

Go to www.serfas.com/warranty for warranty details and online registration. Limited Lifetime Warranty covers manufacture defects.

Serfas warrants to the original purchaser of this product that the product is free from defects in material and workmanship for the lifetime of the product with **online registration**. This warranty does not apply to damage due to heat, physical damage (crashing) resulting from abuse, neglect, improper repair, improper fit, or alterations of the fixture. This warranty is in lieu of all other agreements and warranties, general or specific, express or implied and no representative or person is authorized to assume liability on behalf of Serfas in connection with the sale and use of this product.

Serfas reserves the right to request the return of any product submitted for warranty consideration. All customers should contact Serfas directly for warranty service.

Battery Warranty: Batteries are covered by a one year warranty from date of purchase.

To make a claim, please e-mail warranty@serfas.com. If e-mail is unavailable please call Serfas at 623.888.5841.