



TST-150

USER MANUAL

Thank you for choosing a Serfas Spectra Tail Light! We know you will be happy with the performance and value you are getting in this product. This manual is intended to help get you started on your journey down that well lit path. Please read this manual completely and use the recommended care precautions before using this product. If you have any further questions regarding this product please go to our website at www.serfas.com or call us at 1-623-888-5841.

SPECIFICATIONS

- * 1 CREE XP-E
- * RING OF 20 HIGH POWERED MICRO LEDS
- * CNC ALUMINUM HEAT SINK LIGHT HOUSING
- * LIGHT SENSITIVE AUTO ON/OFF
- * LAST MODE MEMORY FUNCTION
- * AUTO SAFE MODE
- * USB RECHARGEABLE
- * WIRED REMOTE SWITCH COMPATIBLE
- * SIDE VISIBILITY
- * WATER RESISTANT (IPX4)

CONTENTS INCLUDED



Contents:

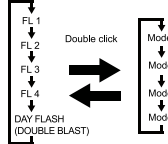
- Spectra Tail Light
- Aero Post Bracket
- USB Cable
- Manual

Optional Accessories:

- TS-REMOTE-R: USB Remote
- Multiple Serfas Brackets

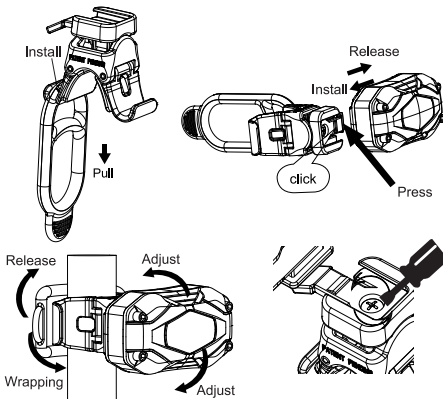
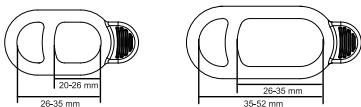
LIGHT OPERATION

1. Double click the power button to toggle between the steady and flashing modes. (With mode memory, the light will resume previous mode upon next usage.)
2. Press and hold the power button for 1 second to switch off. (With mode memory, the light will resume previous mode upon next usage.)



HOW TO MOUNT THE TAIL LIGHT

1. Choose the strap that fits your bar.
2. Make sure the strap is secure on the light hook.
3. Hold the light on the handlebar/seat post.
4. Wrap the rubber strap around the bar and stretch the strap around the opposite light hook.
5. Slide the light forward onto bracket until it click into place.
6. Press down the release lever to remove.
7. Adjust the vertical beam angle when mounted on the seatpost, by loosening the screw knob and rotating the light up or down for your preferred angle. Tighten the screw knob to secure the light in place.



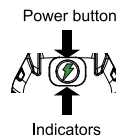
HOW TO MOUNT THE TAIL LIGHT TO THE SADDLE RAIL BRACKET

1. Loosen the screws in the saddle bracket with the Allen key.
2. Clamp the bracket onto the saddle rail.
3. Align the screw holes, using the Allen key to tighten the bracket.
4. Slide light forward onto bracket until it clicks into place.
5. Press down the release lever to remove.
6. Twist the light body to adjust the vertical angle.

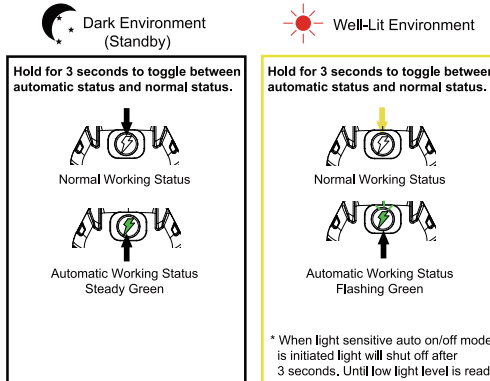
LIGHT SENSITIVE AUTO ON/OFF FUNCTION

1. Press power button to turn on light. (If not already on)
2. Press and hold the power button for 3 seconds until indicator light in power button goes from blue to green. This turns the light sensitive feature on. (To turn off light sensitive feature press and hold power button 3 seconds until indicator goes from green to blue.) * Light must be on to switch this function on or off.
3. Select the mode you want to use by pressing the power button.
4. Press the power button for 1 second to switch off.

- Automatic status**
- * Standby - flashing green
 - * Working - steady green
- Low battery status**
- * Steady blue
- Auto safe mode**
- * Flashing blue



LIGHT SENSITIVE AUTO ON/OFF OPERATION

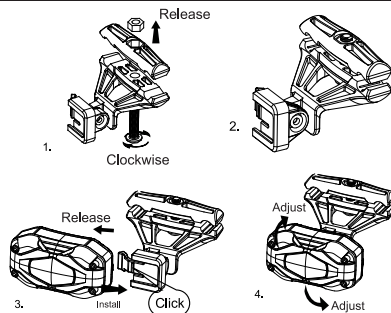


* Sensor has a 30 second delay when in well-lit environment before light turns off.



Remember to turn off the light when not in use. You must turn light off when storing. To turn light off in any mode press and hold the power button for half a second. FAILURE TO TURN LIGHT OFF CAN LEAD TO LIGHT TURNING ON DURING STORAGE.

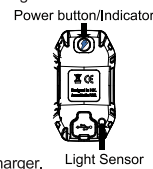
SADDLE RAIL BRACKET DIAGRAM



HOW TO CHARGE THE BATTERY

Attention: If you do not use the battery for a long time, be sure to fully recharge every 3 months. Please store the battery in a cool and dry place. Recharge the battery after each long usage.

- Charging indicator**
- * Flashing Blue - charging
 - * Steady Blue - charged



1. Plug USB micro cable into charging port.
2. Plug cable into wall or computer USB socket.
3. Charge time may depend on computer or wall charger.
4. When the battery is fully charged, please unplug the USB cable or wall charger. Then replace the rubber cover.
5. It is normal that the battery may get warm during charging as the chemical in battery is undergoing a reaction. If the battery is not drained completely before charging, it may also get warm.
6. Several factors can influence the battery's durability: type of cell strain, the maintenance routine, the temperature and number of charges, etc.
7. The battery capacity may become 80% effective after 300-500 charge/discharge cycles.
8. The battery voltage and capacity decrease at low temperatures, especially near or below the freezing point. The capacity decreases 5%-10% at freezing (burn time decreases 50%). At -20°C, the capacity decreases 30% (burn time decreases 70%). The battery performance will return normal when the temperature gets up to 70°F/20°C. The battery will lose around 1% of its capacity per day when you store the battery at normal room temperature. Battery temperature should never exceed 104°F/40°C, it will lose about 5% of its capacity per day.
9. If you do not use the battery for a long time, be sure to fully recharge every 3 months. Please store the battery in a cool and dry place.

AUTO SAFE MODE

1. When the signal " " turns on, it means the battery is low. You should charge your light.



Steady-Blue

2. When the signal " " flashes, it means that is in very low power stage, then the safe mode will be on and cannot be changing mode accordingly. The light may have an hour left for usage. (Depending on which mode the light was on before entering safe mode, it would affect the run time of safe mode before battery is completely drained.)



Flashing-Blue

RUNTIMES

TST-150

MODE	LUMEN	RUNTIME
Low	15	up to 6.5 hrs
Medium	30	up to 3.5 hrs
High	50	up to 2 hrs
Overdrive	80	up to 1.25 hrs
Low Flash	15	up to 40 hrs
Medium Flash 1	35	up to 15 hrs
High Flash	80	up to 7 hrs
Medium Flash 2	35	up to 8 hrs
Daytime Flash	150	up to 25 hrs

HOW TO CLEAN AND CARE FOR THE LIGHT

- * Make sure to clean the dust and dirt on the light with a soft damp cloth after every ride.
- * Water resistant is for rain water only. Do not submerge the battery or the whole light into water when cleaning.



CAUTION: When riding at night, please follow the guidelines below:

- * Use of appropriate bike lighting is recommended & in some places required by law.
- * Light may get hot when in use.
- * Unplug USB connector by the plug, never by the cable.
- * Do not dismantle the tail light. (VOIDS WARRANTY)
- * Not for use under water.
- * Do not look directly at light.
- * Keep tail light away from fire and combustible materials.
- * Unplug the light, charger and cable once the battery is fully charged.
- * This light is for bicycle use only.
- * Do not charge over 5V.
- * Light sensor mode must be off before charging or storing.
- * Do not smoke while charging as the battery may release hydrogen gas. Always charge your battery in a well-ventilated space.
- * Never connect or disconnect the plug or cord with wet hands while charging. Do not connect or disconnect the plug or cord when they are wet, it may lead to electric shock.

WARRANTY

Serfas warrants to the original purchaser of this product that the product is free from defects in material and workmanship for the lifetime of the product. This warranty does not apply to damage due to heat, physical damage (crashing) resulting from abuse, neglect, improper repair, improper fit, or alterations of the fixture. This warranty is in lieu of all other agreements and warranties, general or specific, express or implied and no representative or person is authorized to assume liability on behalf of Serfas in connection with the sale and use of this product.

Serfas reserves the right to request the return of any product submitted for warranty consideration. All customers should contact Serfas directly for warranty service.

To make a claim, please email warranty@serfas.com or call us at 1-623-888-5841.

- * Please include your full contact information (name, address, phone number, and email [if applicable]), and a description of the issue.
- * Address items to:

Serfas
2333 W. Utopia Rd.
Phoenix, AZ 85023

Serfas batteries are covered by a **ONE YEAR LIMITED WARRANTY** from the date of purchase. This covers the battery and battery internals.

Please file claims with Serfas directly. Do not take to retailer for warranty issues.