

CP-N4 STARTER COMBO

STARTER HEADLIGHT

SL-150

MODE	LUMEN	RUNTIME
Steady	150	up to 30 hrs
Flashing	—	up to 85 hrs

WEIGHT 133g with bracket

DURÉE CONFIGURATION Jusqu'à 85 heures Modes constant et clignotants.

DAUER KONFIGURATION Bis zu 85 Stunden Verlässliche und blinkende Modi.

DURACIÓN CONFIGURACION Hasta 85 horas Modos intermitentes y constantes.

ATTENTION

Headlight Battery Installation

- 1 Hold light with on/off button facing you with lens up.
- 2 Holding the lower body with one hand, lightly twist head portion from left to right **counter clockwise**.
- 3 Remove battery holder and replace batteries.
- 4 Put head back on and twist from right to left **clockwise** to secure.

TO OPEN



TO CLOSE

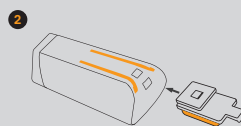


Includes: Bracket Adaptor & (3) AA Batteries

SL-150 BRACKET MOUNTING INSTRUCTIONS



Press **Release Button** down & slide Bracket Adaptor in.

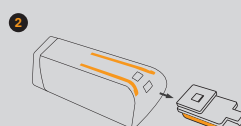


Flip SL-150 Light & Slide Bracket Adaptor in.

SL-150 BRACKET REMOVAL INSTRUCTIONS



Press **Release Button** down & slide Bracket Adaptor out.



Flip SL-150 Light & Slide Bracket Adaptor out.

International Consumers

Please contact your local distributors for warranty guidelines as they may vary by country. List of distributors can be found at www.serfas.com/distributors/.

SERFAS, INC.

2333 W. Utopia Rd.
Phoenix, AZ 85027

serfas.com



WARNING

This product may contain a chemical known to the State of California to cause cancer, birth defects, or other reproductive harm.

3-LED REAR FLASHER TAIL LIGHT

TL-415

MODE	LUMEN	RUNTIME
Steady	3	up to 140 hrs
Flashing	—	up to 200 hrs

WEIGHT 50g with bracket

DURÉE CONFIGURATION Jusqu'à 200 heures Modes constants et clignotants.

DAUER KONFIGURATION Bis zu 200 Stunden Modi, verlässliche und blinken.

DURACIÓN CONFIGURACION Hasta 200 horas Modos de constantes e intermitentes.

ATTENTION

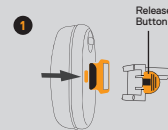
Tail light battery replacement

- 1 Hold light facing you with on/off switch to the right.
- 2 Holding the black portion of the body, insert coin into left or right notch placed between red/black housing.
- 3 Twist coin to separate casing.
- 4 Input batteries according to +/- configuration. Noted on light body.
- 5 Push body back together.

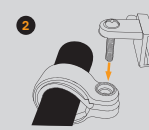


Includes: (2) AAA Batteries, Seat Post Bracket, & Seat Stay Bracket

TL-415 BRACKET MOUNTING INSTRUCTIONS

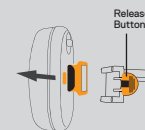


Press **Release Button** down & slide Bracket Adaptor in until it clicks.



Insert the Bracket Adaptor Nail in designated slot & tighten.

TL-415 BRACKET REMOVAL INSTRUCTIONS



Press **Release Button** down & slide Bracket Adaptor out.

Care

- * Make sure to clean the dust and dirt on the light with soft damp cloth after every ride.
- * Water resistant is for rain water only. Do not submerge the battery or the whole light into water when cleaning.

Warranty

Serfas warrants to the original purchaser of this product that the product is free from defects in material and workmanship for the lifetime of the product. This warranty does not apply to damage due to heat, physical damage (crashing) resulting from abuse, neglect, improper repair, improper fit, or alterations of the fixture. This warranty is in lieu of all other agreements and warranties, general or specific, express or implied and no representative or person is authorized to assume liability on behalf of Serfas in connection with the sale and use of this product.

Serfas reserves the right to request the return of any product submitted for warranty consideration. All customers should contact Serfas directly for warranty service.

To make a claim, please e-mail warranty@serfas.com.

